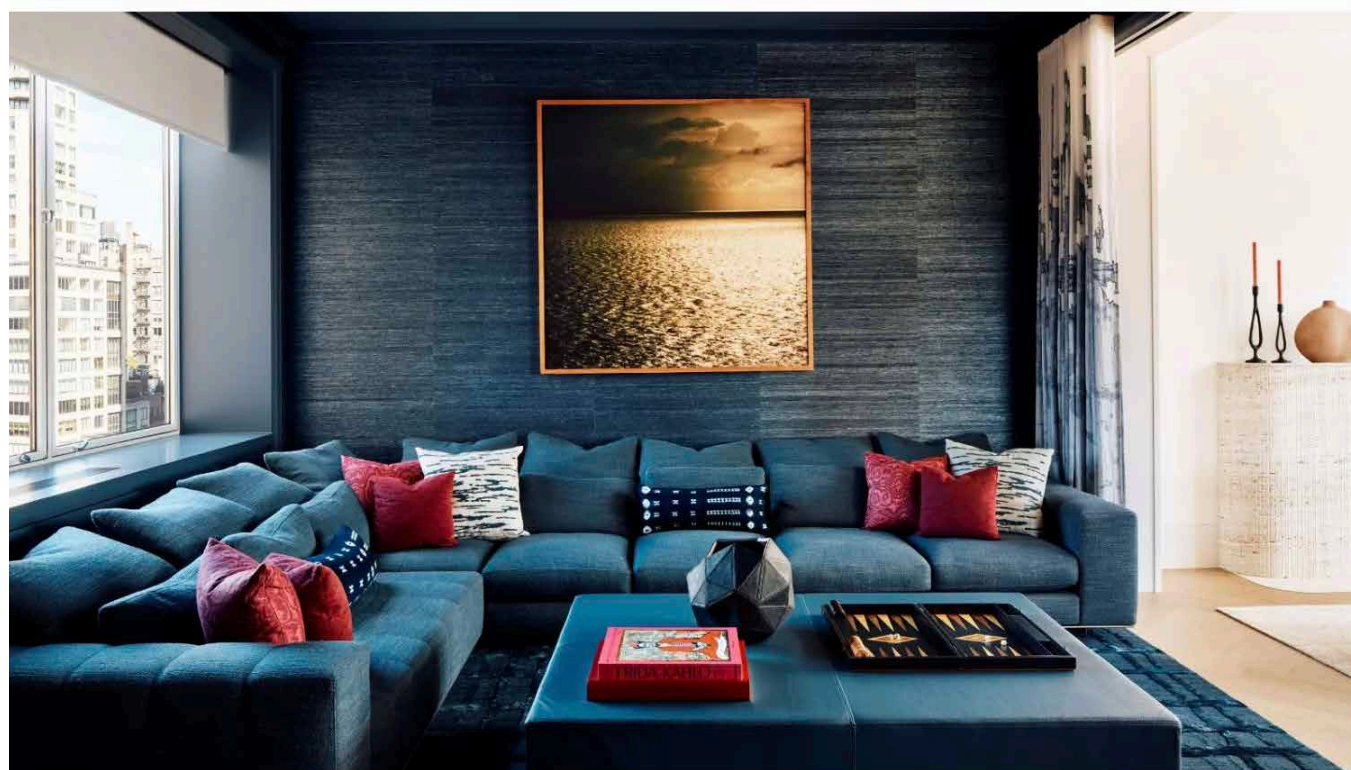


# HOMES & GARDENS

## INTERIOR DESIGN

### Blending two contrasting styles in a city apartment was no easy task – but this home brings together California casual and classic Upper East Side charm with ease

'The finished interior blends quiet luxury with laid-back elegance to mix New York and California's best qualities'



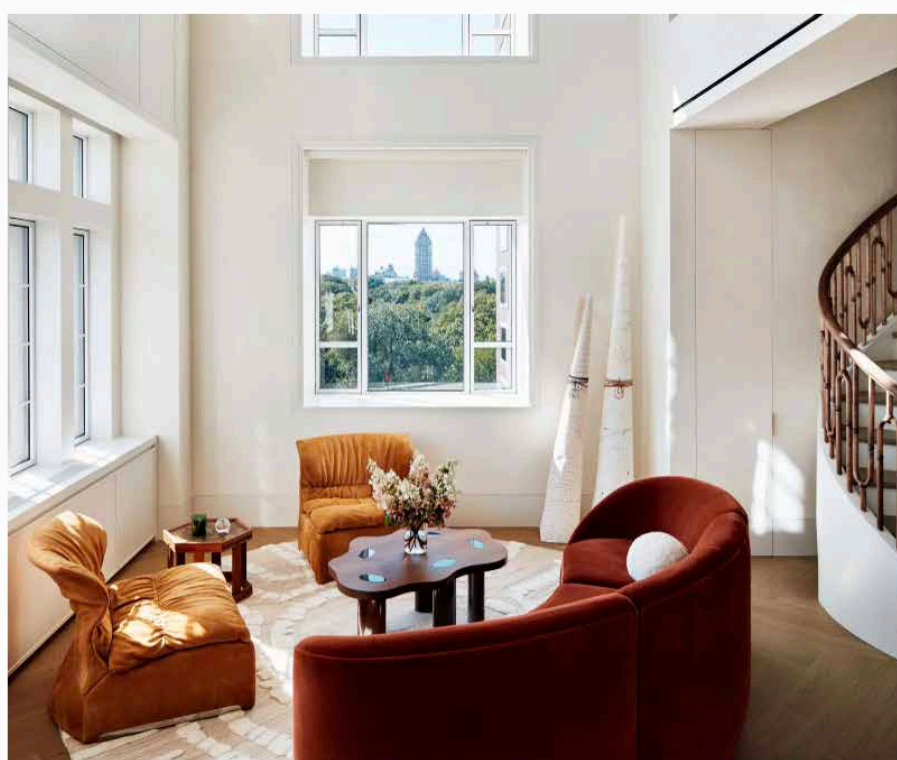
(image credit: Blaine Davis)

By [Karen Darlow](#) published 18 hours ago in [Home-tours](#)

This smart apartment in New York City's Upper East Side is a masterclass in how to blend classic East Coast style with California casual.

The new owners had recently relocated from San Francisco and were looking to introduce a little laid-back [California casual style](#) to the traditional urban apartment. In a block built in 1928 and overlooking Central Park, it couldn't have been more Manhattan, but the interior design team at [Pembroke & Ives](#) understood exactly what the owners were hoping to achieve.

'The finished interior blends [quiet luxury](#) with laid-back elegance to mix New York and California's best qualities,' says Diego Arias, senior designer at Pembroke & Ives. 'The design embraces warm wood tones with a retro pulse that breathes new life into the space.'



(Image credit: Blaine Davis)

'We wanted to marry the client's warm and inviting West Coast sensibilities with a classic pre-war Upper East Side aesthetic while keeping everything feeling modern and fresh,' adds Diego.

The [entryway](#) sets the tone for the home's refined yet inviting aesthetic, with a custom terrazzo floor with mid-century Italian influences to welcome guests.



(Image credit: Blaine Davis)

In the [living room](#), as elsewhere in the apartment, there's an eclectic and sophisticated mix of traditional details and vintage pieces. 'The color palette was also very important,' adds Diego. 'We used a bold mix of rich [jewel tones](#) layered on top of a soft palette of warm woods, ivory, and blush that created an exciting yet inviting and warm atmosphere.'

'My favorite design elements are the metal and glass partitions, the soft-curve flush casings/trims throughout, and the raked travertine custom [fireplace mantel](#) here in the living room.'



(Image credit: Blaine Davis)

The family room layout makes it a versatile and cozy space. One wall is composed of a custom glass and metal sliding door system that can contain the space or open it to the adjacent living room, depending on the client's entertainment needs.

'It can be fully enclosed with curtains for movie watching,' says Diego, 'And its blue color scheme means this is a bold yet soothing and soft space, perfect for lounging or entertaining.'



(Image credit: Blaine Davis)

With windows on three sides, the breakfast nook is a wonderfully light part of the kitchen where a dark wood table is perfectly placed to make an elegant contrast with the room's fitted white oak cabinets.



(Image credit: Blaine Davis)

Designed with oak wood rift-cut veneer cabinetry, Bianco Dolomiti stone countertops, and Heath tiles as a backsplash, the kitchen blends functionality with refined craftsmanship. California Faucet fixtures provide an elegant touch.



(Image credit: Blaine Davis)

No self-respecting Manhattan apartment should be without a home bar, and there was just enough space for cocktail essentials in a small arched alcove between the kitchen and passageway. More textured wall tiles and a striking marble sink and counter complement the oxblood cabinets and trim.



(Image credit: Blaine Davis)

The romantic guest bedroom scheme leans towards a more traditional East Coast vibe, with a silk chinoiserie wallcovering and an elegant upholstered bedhead. The design team stuck to a color palette of warm, natural shades here, perfect choices for a bedroom.



(Image credit: Blaine Davis)

The primary bedroom, meanwhile, shows more of its West Coast influences.

'This room embodies a balance of softness and sophistication, with custom millwork and lighting choices enhancing the ambiance,' says designer Diego. 'We created floor-to-ceiling windows in the primary bedroom to open up the view from the bed straight out onto Central Park.'




(Image credit: Blaine Davis)

In an apartment that's set up for entertaining, it's no surprise that the powder room ideas are on point. Dramatic and elegant, this space showcases Patagonia stone and a bold wallpaper selection, making it a striking statement within the home.

Interior design: [Pembroke & Ives](#)  
Photography: [Blaine Davis](#)



**Andrew Sheinman**     
Founder, Pembroke & Ives

Founded in 1987 by Andrew Sheinman, Pembroke & Ives is an award-winning firm made up of experts in every aspect of interior design, including interior architecture, lighting, space planning, and furnishings. For over 35 years, they have been elevating the vision of their clients' best lived lives. Through their collaborative, considered and responsive approach, the firm creates effortless, comfortable spaces that are the hallmark of the brand. Not beholden to one particular style, their signature aesthetic can be described as 'new traditional' and features a refined use of materials, sophisticated color, strong forms, artisanal details, and collectible design.